

# Greater Kuala Lumpur Transformation Projects

---

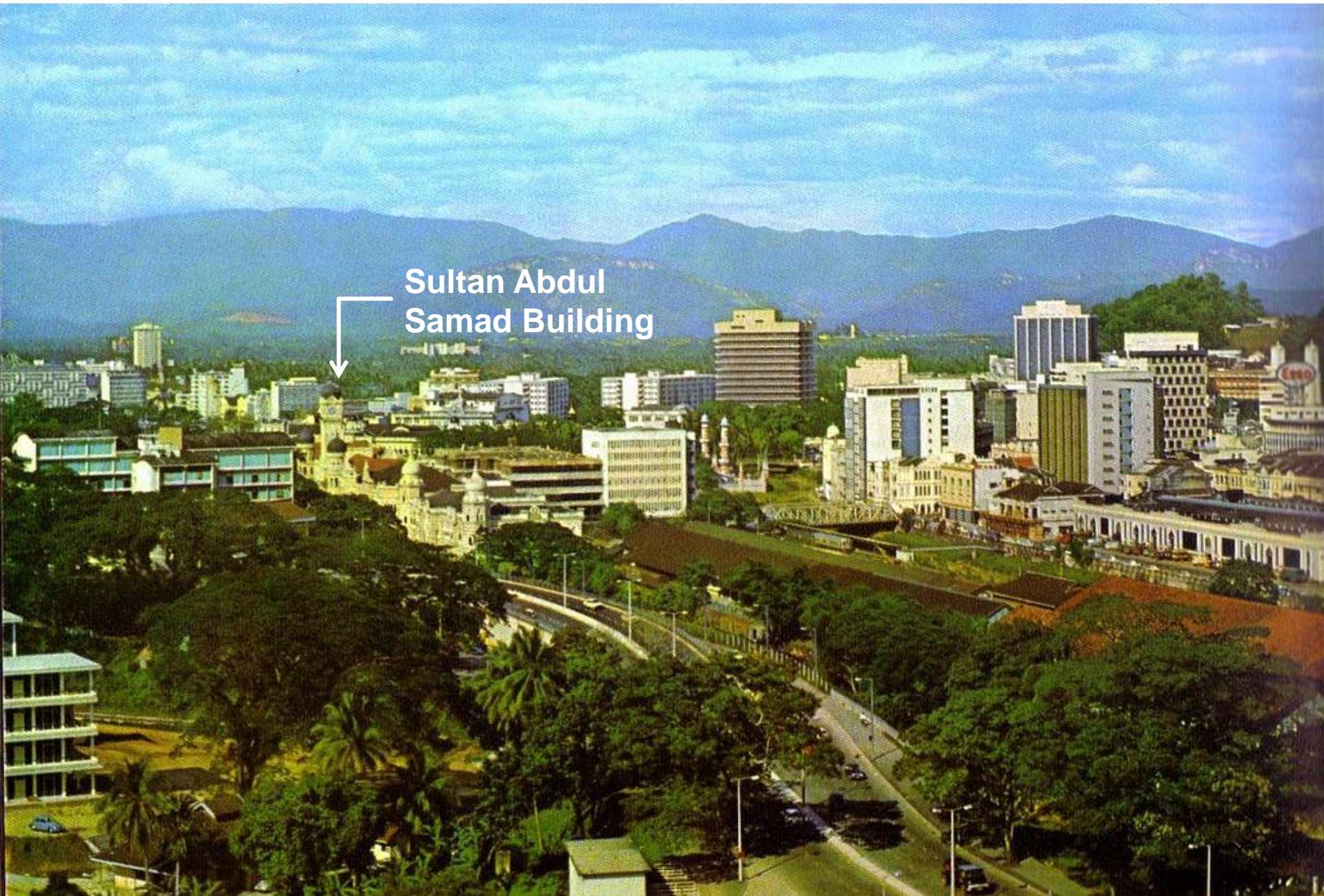
RIVER OF LIFE

# Klang Valley



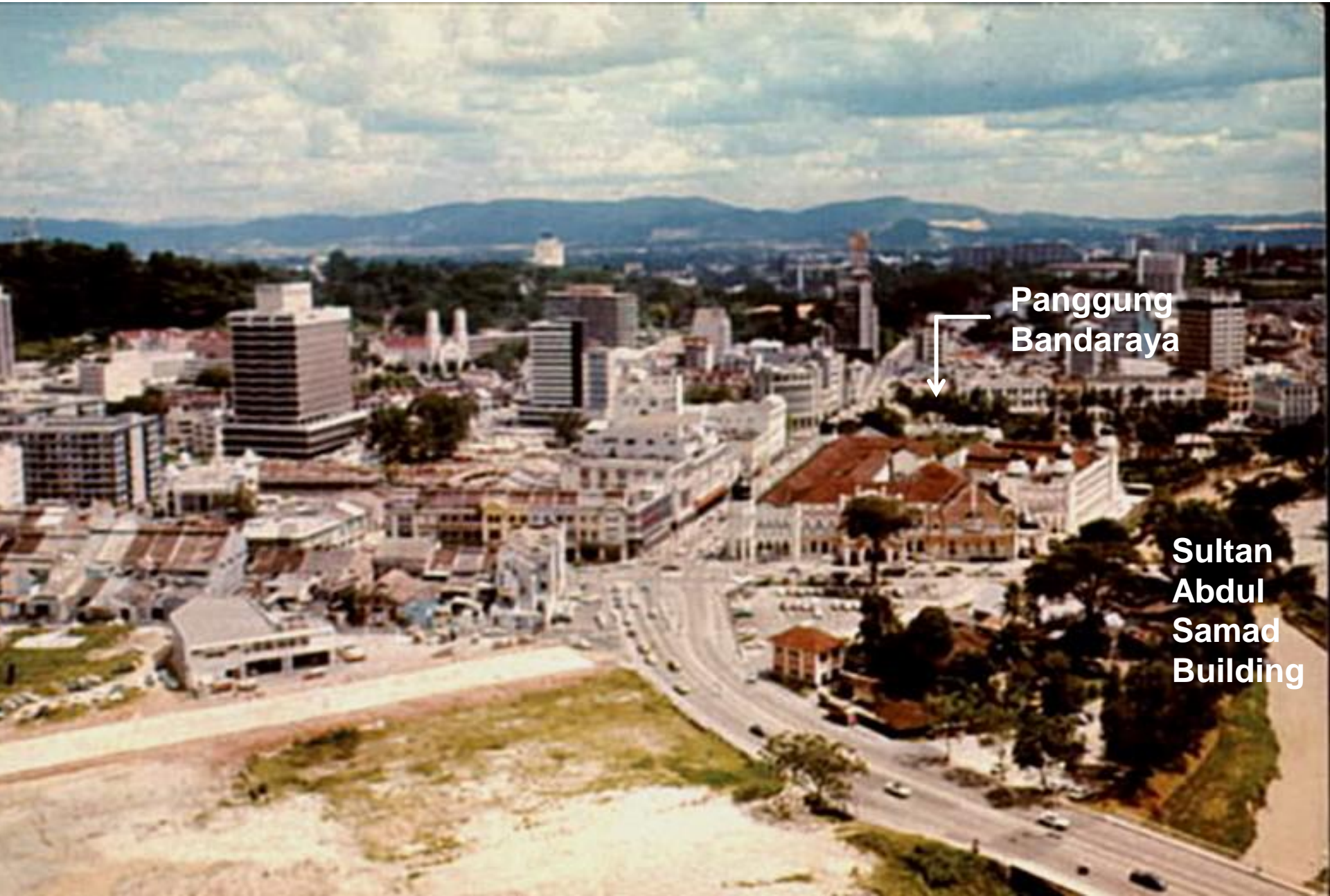


# Kuala Lumpur 1960





# Kuala Lumpur 1970



Panggung  
Bandaraya

Sultan  
Abdul  
Samad  
Building



# Kuala Lumpur 1978

Jalan Sultan Ismail - Golden Triangle





# Kuala Lumpur 1980





# Kuala Lumpur 1992





# Kuala Lumpur 2000





# Kuala Lumpur 2012





# Top 20 Most Livable Cities by 2020



# Kuala Lumpur City by 2020



- Annual Real Growth Rate of **6% in GNI**
- High Income Nation Status with **USD15,000 per capita income**
- Create **3.3 million jobs**

**Klang Valley : Urbanisation as a driver to growth**



# River of Life

a common thread







## Three components



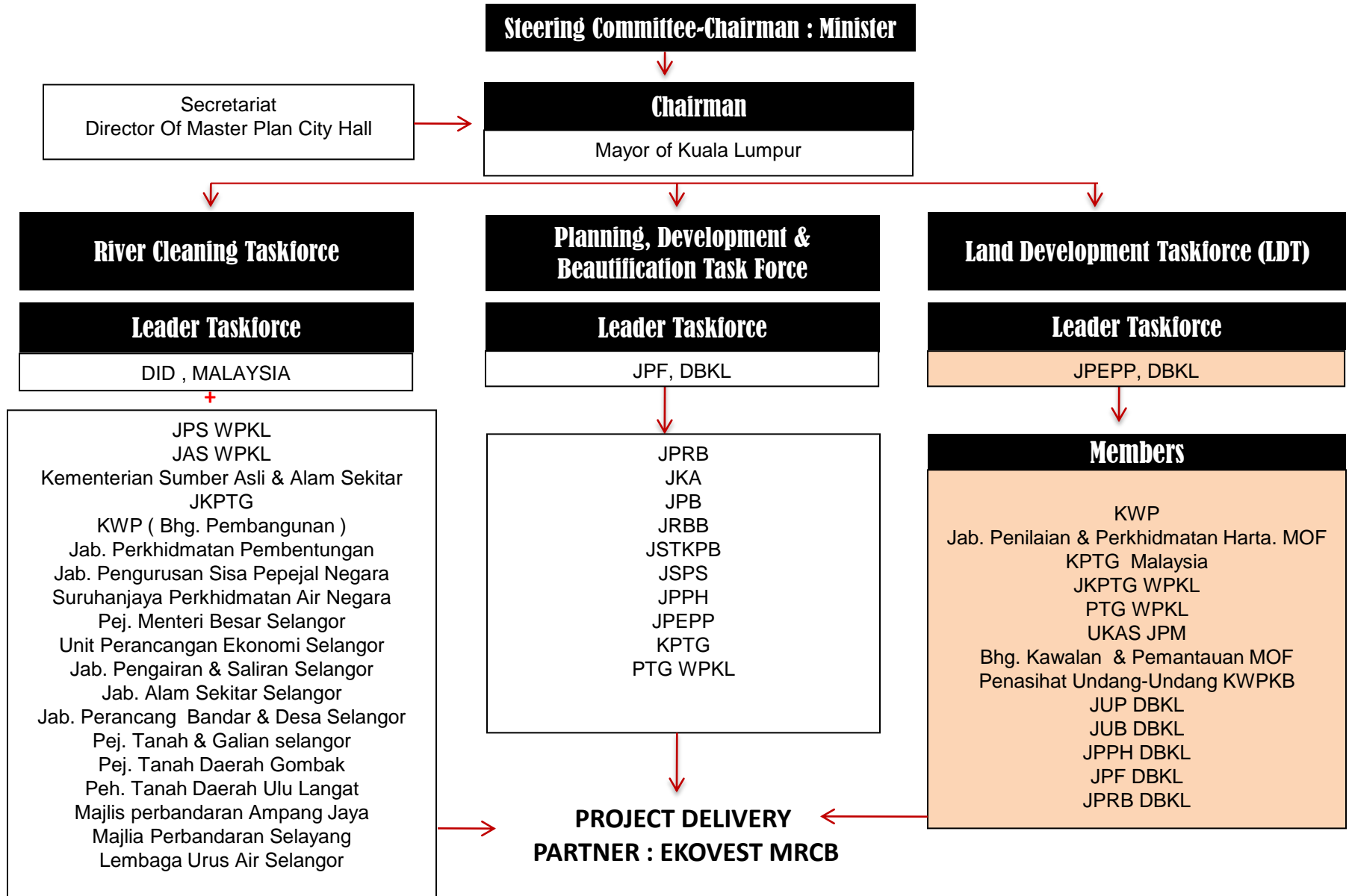
Entry Point Project (EPP) in the Greater Kuala Lumpur/Klang Valley National Key Economic Area under the Economic Transformation Programme.

The goal is to transform the rivers into a vibrant and thriving waterfront by 2020.





# RIVER OF LIFE – ORGANIZATION STRUCTURE






# **RIVER OF LIFE OVERALL MASTER PLAN**



# River of Life

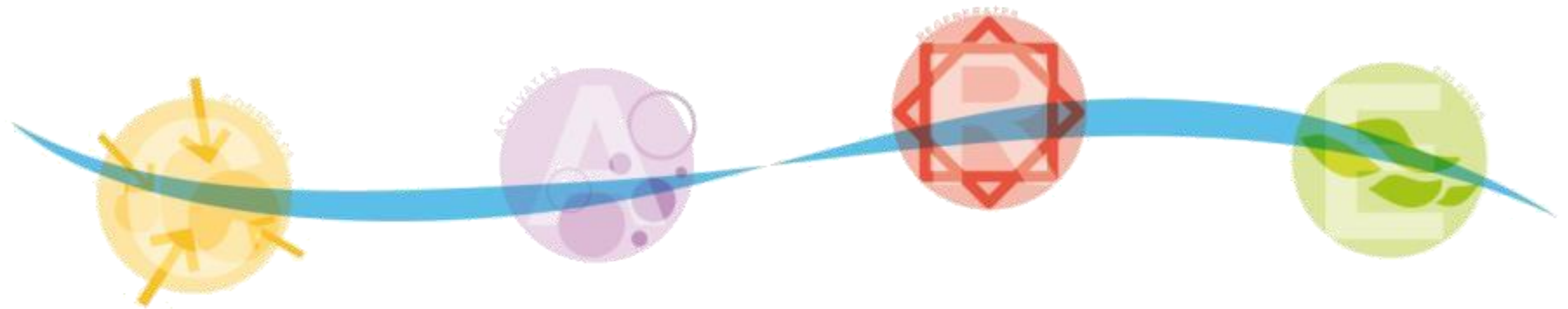


- The plan creates the **framework** for **transformation**, **regeneration** and **growth**.
- It sets the **foundation** for the 11 precincts of River of Life through **consolidation of urban design, landscape, transportation, environmental and economic solutions**.

- The plan creates the **framework** for **transformation, regeneration and growth.**
- It sets the **foundation** for the 11 precincts of River of Life through **consolidation of urban design, landscape, transportation, environmental and economic solutions.**



# River of Life



The River

**C**onnects Us

The River

**A**ctivates Us

The River

**R**egenerates Us

The River

**E**nlivens Us



# GOALS & OBJECTIVES



**TRANSFORM THE RIVER FROM A BARRIER TO A  
CONNECTOR**

Kunshan Civic Plaza



# GOALS & OBJECTIVES



**ESTABLISH A NEW IDENTITY FOR THE RIVER**

Clarke Quay, Singapore



# GOALS & OBJECTIVES



**INCREASE THE ECONOMIC VALUE OF THE RIVER**

Chicago, IL



# GOALS & OBJECTIVES



**REHABILITATE THE RIVER'S ECOLOGY**

North Lakes Community, Queensland



# GOALS & OBJECTIVES

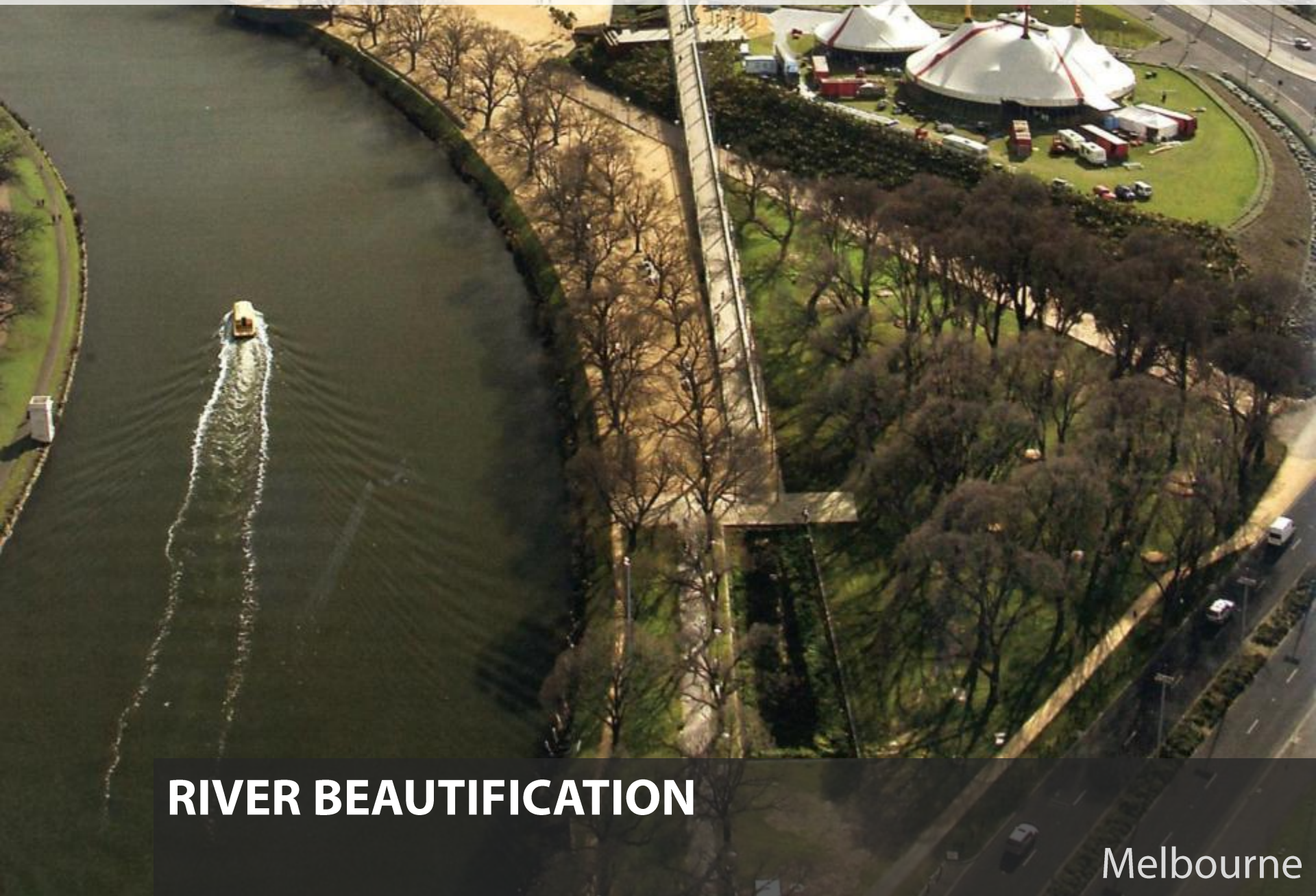


**REVITALISE SOCIAL & CULTURAL HERITAGE OF  
THE RIVER**

Haihe River Embankment



# GOALS & OBJECTIVES

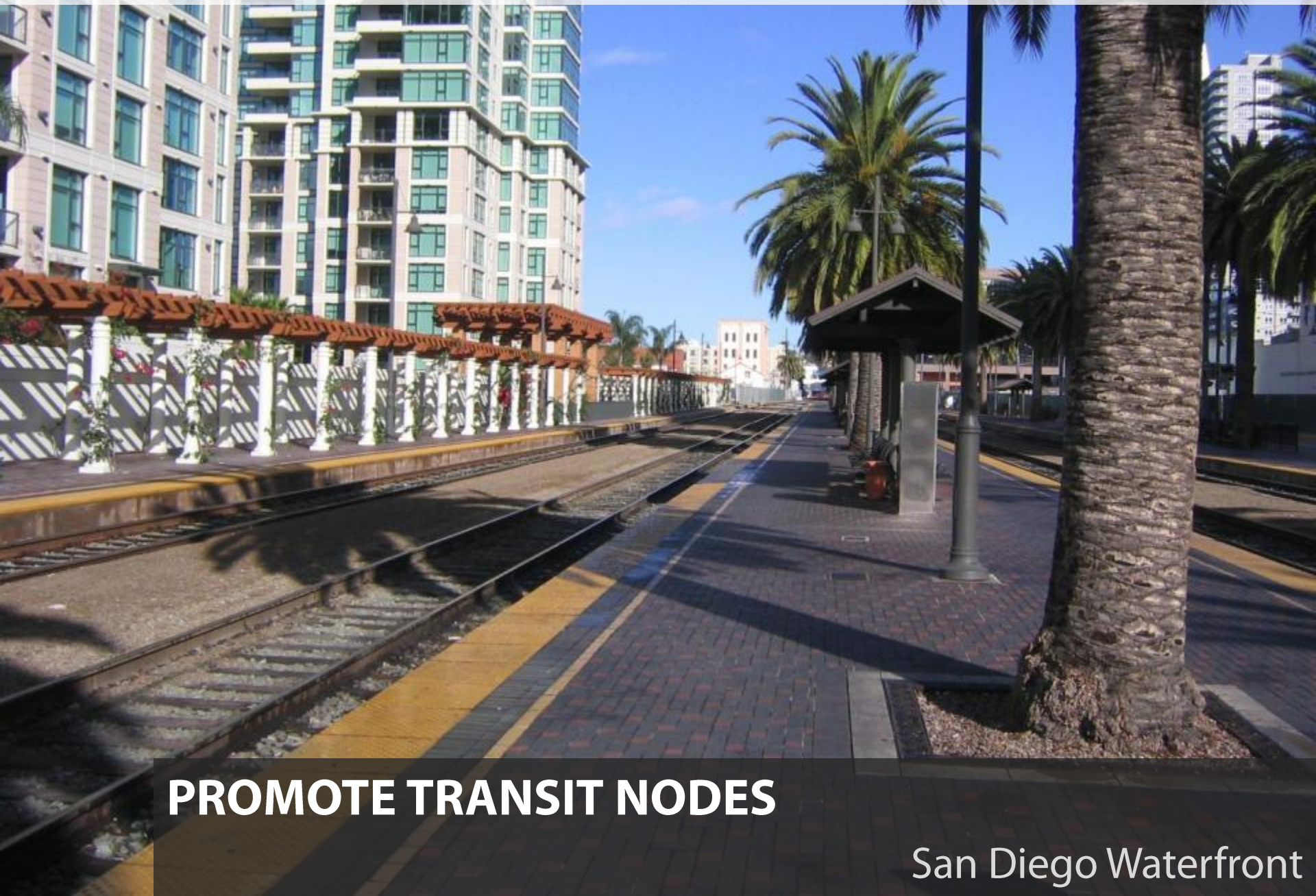


**RIVER BEAUTIFICATION**

Melbourne



# GOALS & OBJECTIVES



**PROMOTE TRANSIT NODES**

San Diego Waterfront



# GOALS & OBJECTIVES



**PROMOTE ENVIRONMENTAL AWARENESS**

Cheonggyecheon, Seoul

# MASTER PLAN





# Context

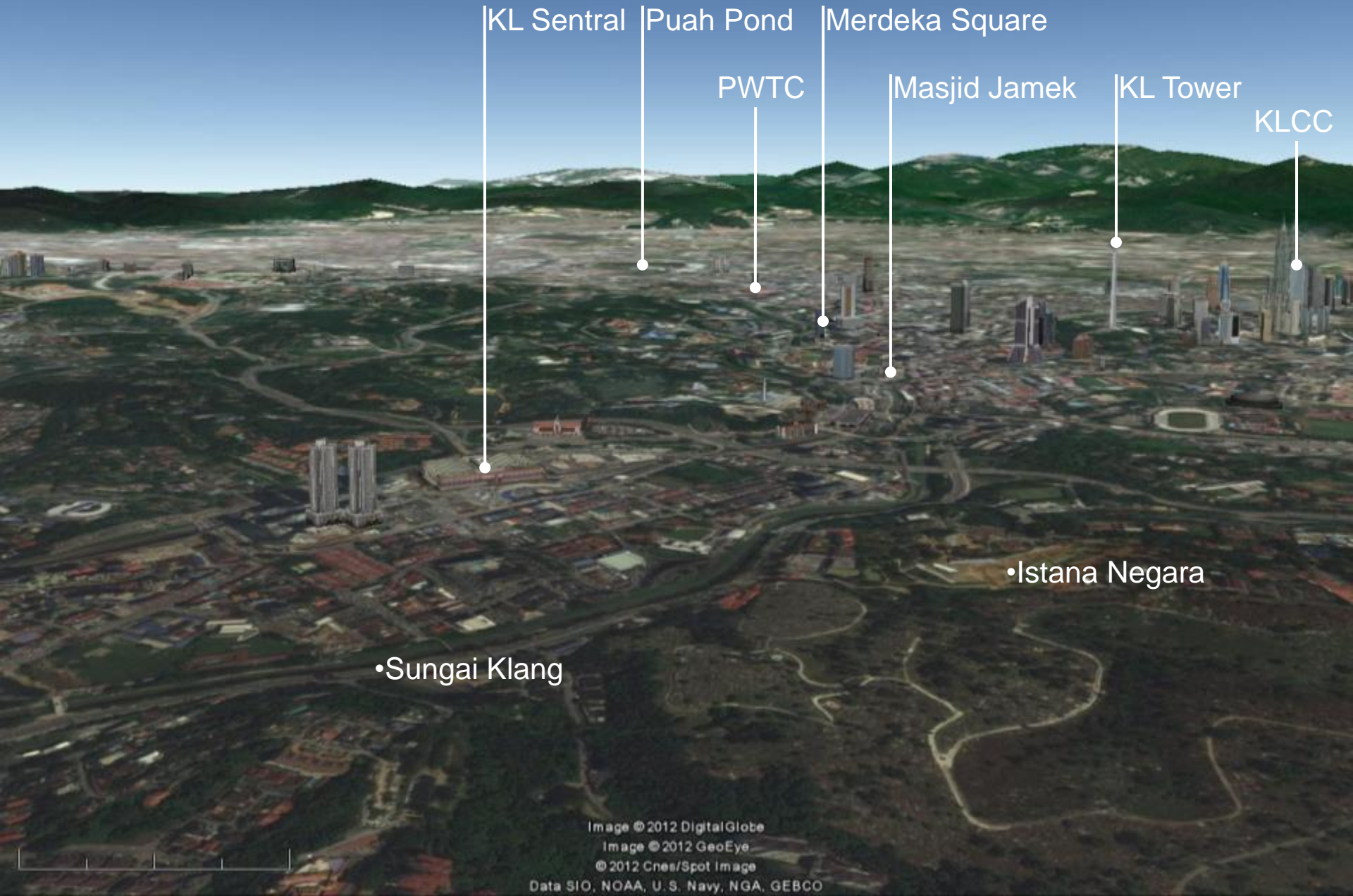


Image © 2012 DigitalGlobe

Image © 2012 GeoEye

© 2012 Cnes/Spot Image

Data SIO, NOAA, U. S. Navy, NGA, GEBCO



# Context



NEAR PUAH POND



# Context



JLN 9/48A



# Context



TITIWANGSA LRT STATION



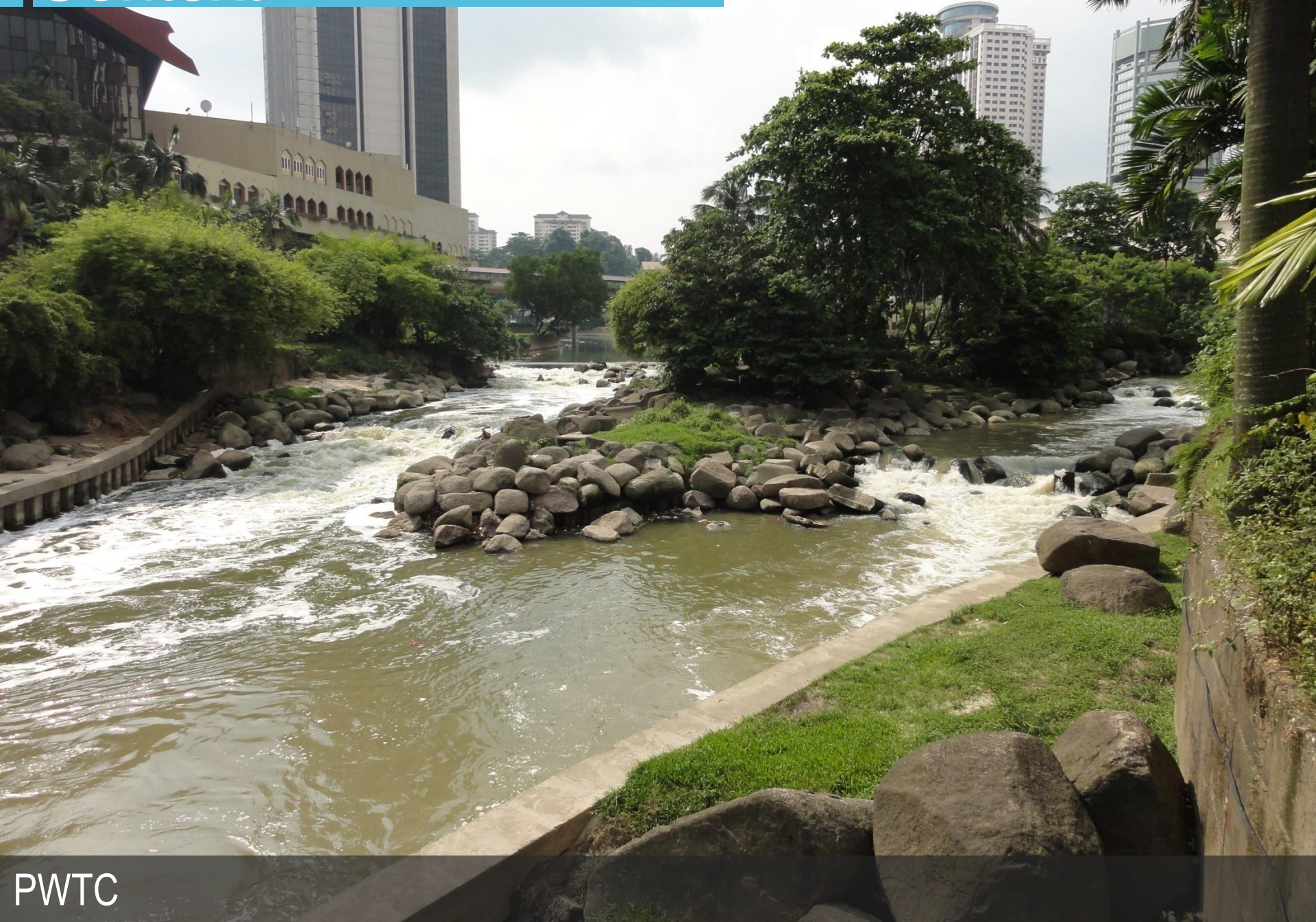
# Context



NEAR DAMAI COMPLEX



# Context





# Context



NEAR OPEN UNIVERSITY MALAYA



# Context



NEAR DANG WANGI LRT STATION



# Context



MASJID JAMEK



# Context



PASAR SENI BUS STATION



# Context



NEAR TUN SAMBANTHAN MONORAIL STATION



# MASTERPLAN//



ONE MALAYSIA PARK



TASIK TITIWANGSA



CULTURE GUIDING GALLERY -  
DROPLETS



CULTURE GUIDING GALLERY -  
CULTURAL PATTERN



BANGKOK BANK PLAZA



PETALING STREET



RIVERSIDE ECO COMMUNITY



TITIWANGSA VILLAGE



PUTRA TOWERS - NIGHT VIEW



MASJID JAMEK & BANGUNAN SULTAN ABDUL SAMAD



PUAH POND



PUTRA TOWERS - DAY VIEW



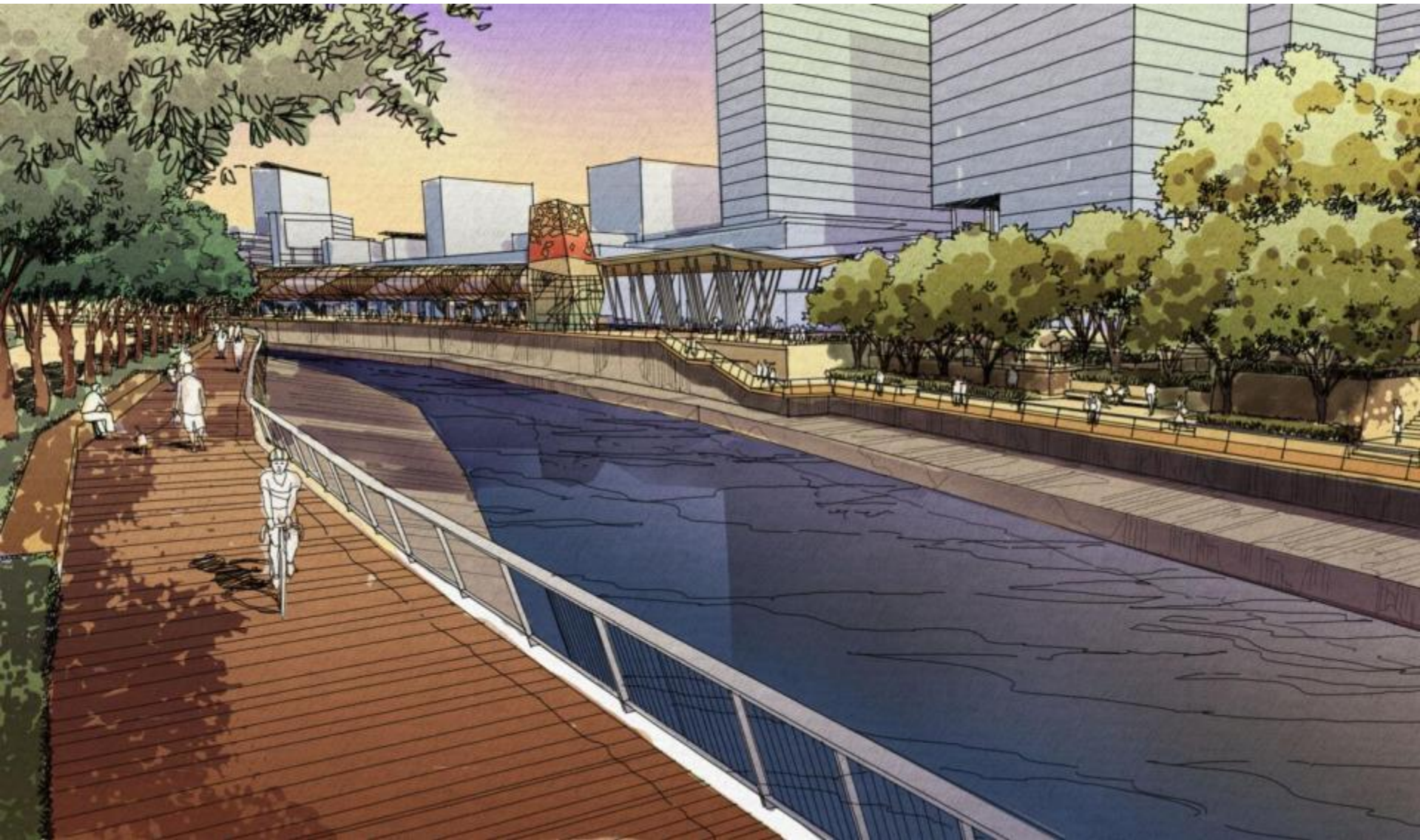
THE TERRACES



BANGUNAN SULTAN ABDUL SAMAD COURTYARD



# BIG MOVES // PASAR SENI





# BIG MOVES // PUAH PARK



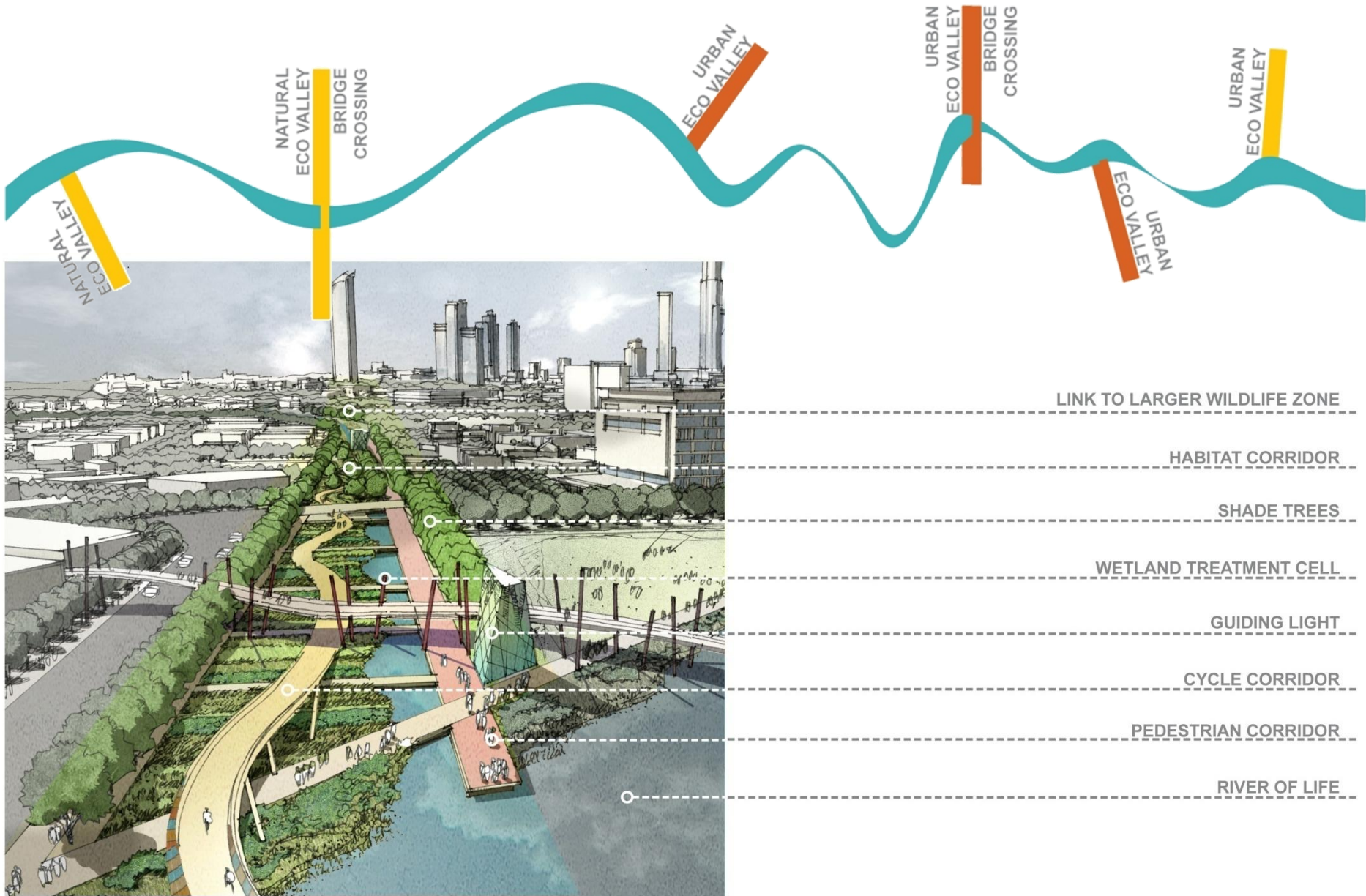


# BIG MOVES // ONE MALAYSIA PARK



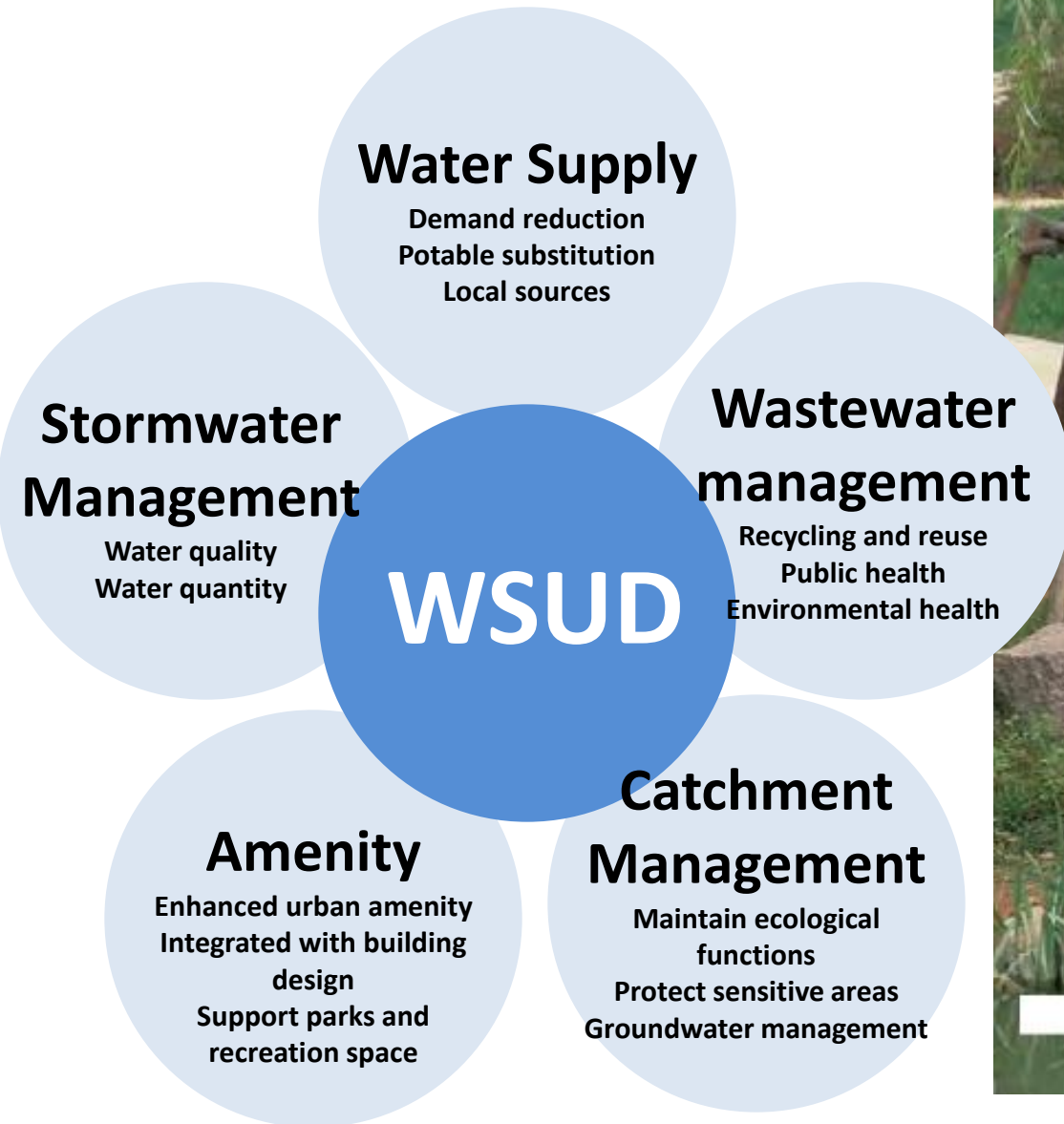


# River of Life: Eco Valley





# Water Sensitive Urban Design (WSUD)





# Water Sensitive Urban Design



## WSUD STRATEGIES

### STORMWATER MANAGEMENT

- INCORPORATE WSUD IN ROAD, DRAINAGE AND STREETScape WORKS
- WATER QUALITY EDUCATION PROGRAM
- WATER DEMAND MANAGEMENT
- RAINWATER HARVESTING AND REUSE
- WATER EFFICIENCY FOR NEW BUILDINGS, PARKS, GARDENS AND FACILITIES
- WATER USE EDUCATION PROGRAM



# 100 YEAR FOREST

## ECOLOGICAL BASELINE

119 species of freshwater fish and 85 bird species are known to exist in the Klang River Basin



But only a few are left in the project area due to habitat degradation

Strategy: Create New Habitats and Enhance Biodiversity





# Bukit Nanas Forest Reserve

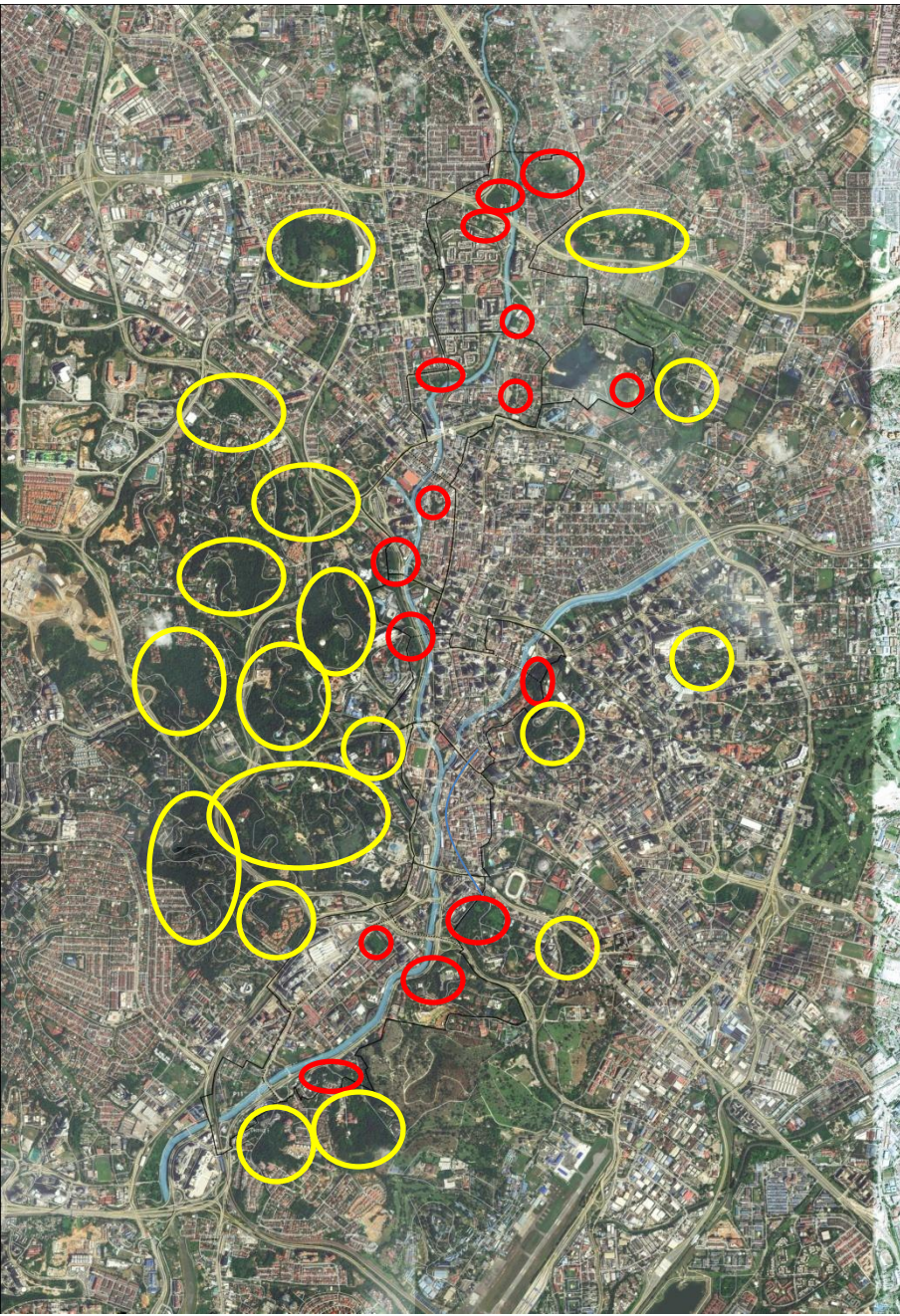


- Only remaining virgin forest within a city
- Smallest rainforest in the world
- One of the oldest permanent forest reserve in Malaysia
- Green lung of the city
- Covers only 10.5 hectares of lowland dipterocarp forest
- Wildlife reserve and bird sanctuary







# Existing Urban Forest Pockets



## LEGEND

-  Urban forests within project boundary
-  Urban forest outside of project boundary

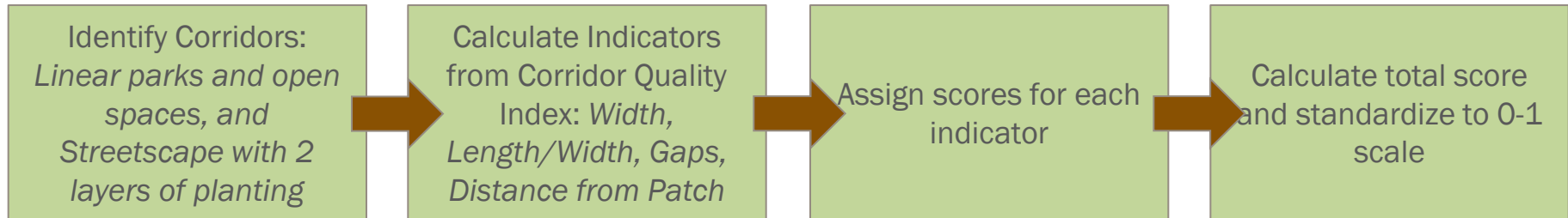




# BIG MOVES // EcoCorridors

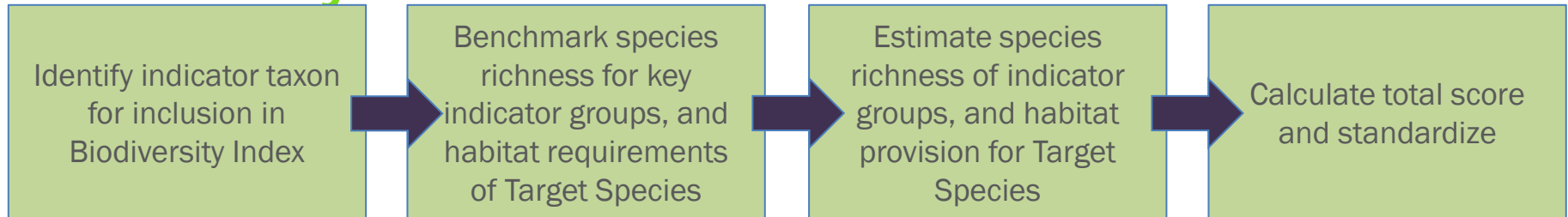
## Ecological Connectivity

KPI: Corridor Quality Index



## Biodiversity

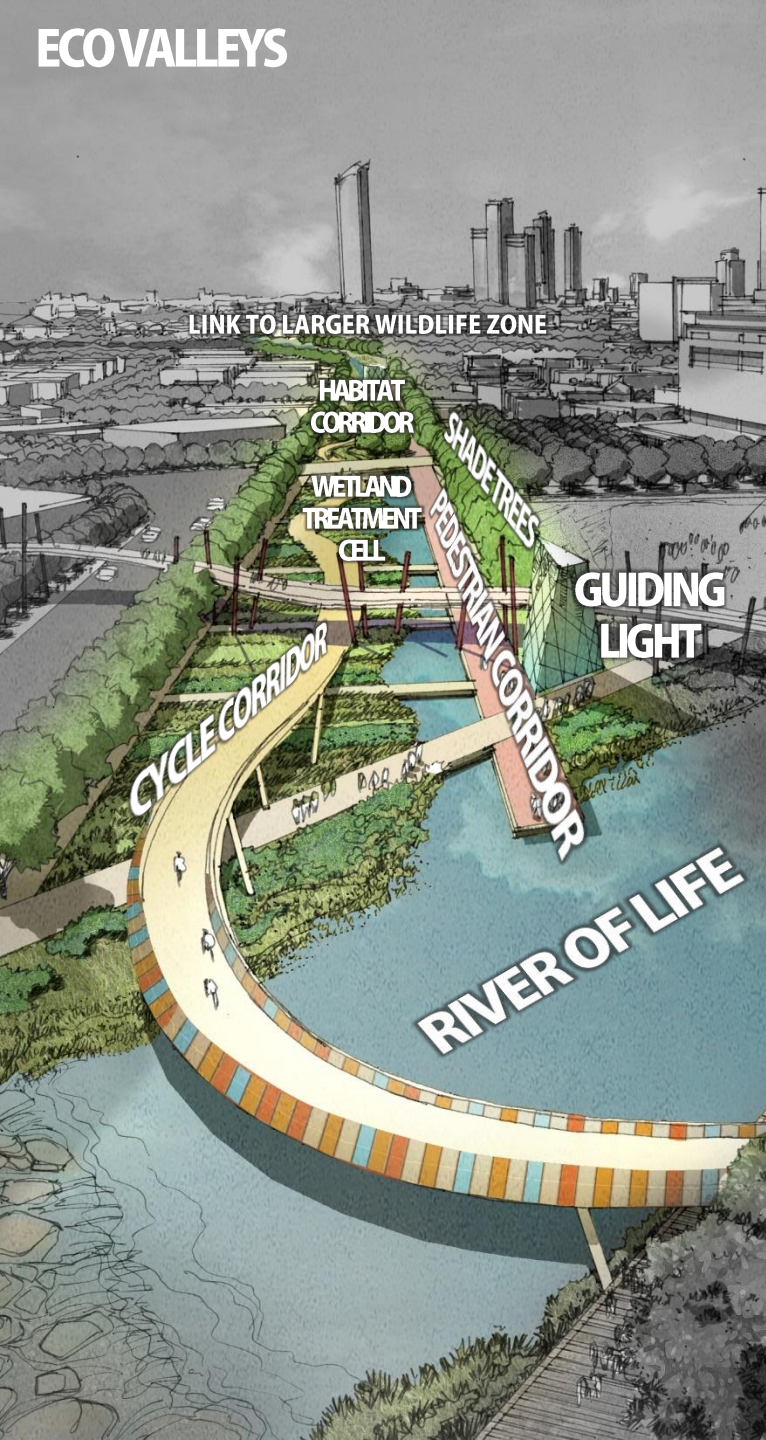
KPI: Biodiversity Index



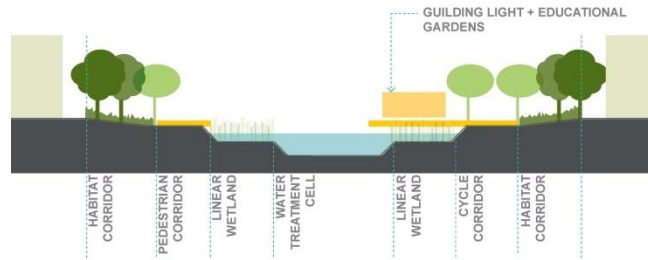
Open Space Characteristic	Relationship with Biodiversity	Response
Size	Larger open spaces support more species than smaller spaces	Increase size of planned open spaces
Canopy	Open spaces with higher canopy coverage support more species than spaces with lower canopy coverage	Increase proportion of tree/shrub planting within open spaces
Planting Schedule	Open spaces stocked with native plants support more species than spaces with exotic	Planting with native species to mimic natural ecosystems
Connectivity	Connected open spaces support more species than unconnected spaces	Increase connectivity of open space network
Target Species	Providing specific breeding/feeding habitats encourages target species utilization	Design of Open Space to mimic natural habitats of Target Species.



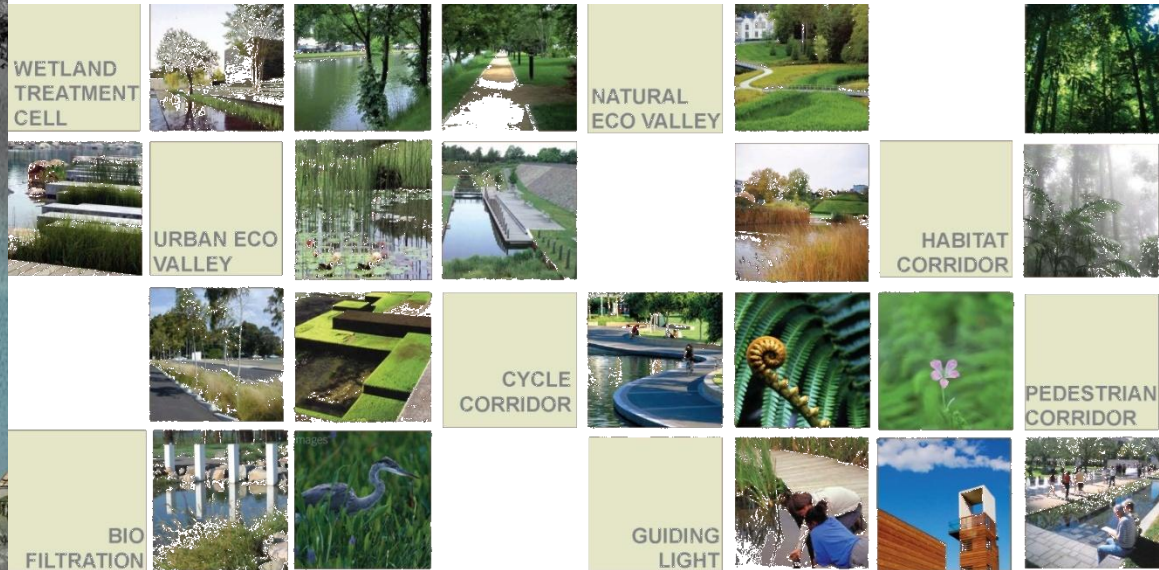
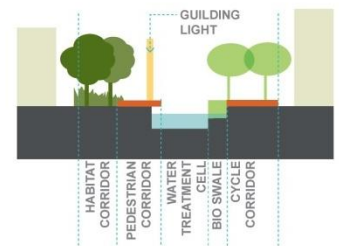
# ECO VALLEYS



BIO VALLEY - NATURAL



URBAN



increase in **900% HABITAT AREA**



# BIG MOVES //

## TRANSIT ORIENTED DEVELOPMENT





# BIG MOVES // JALAN TUANKU ABDUL RAHMAN

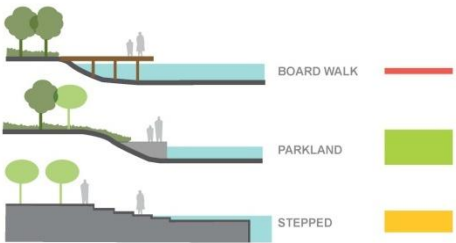
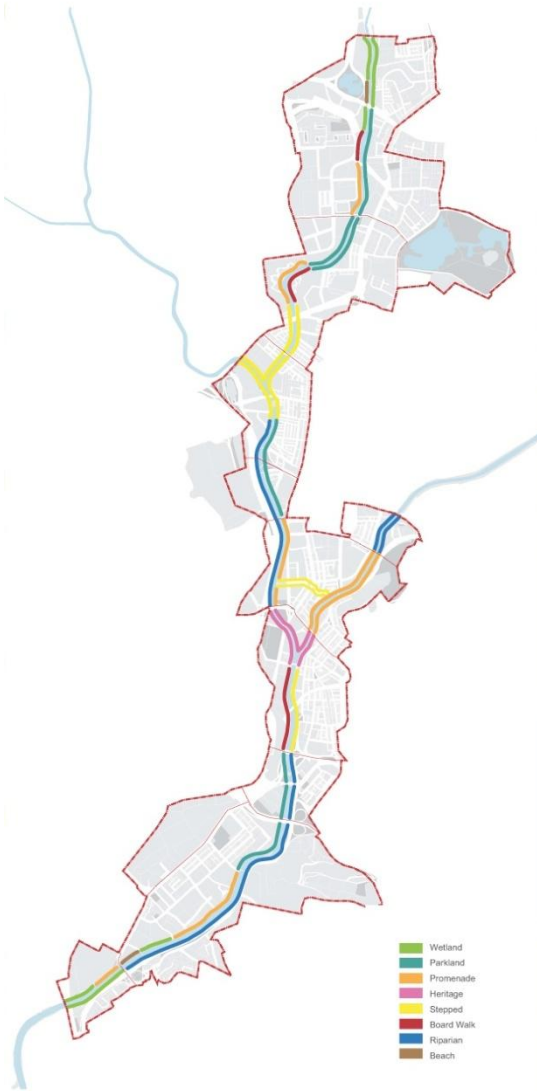








# RIVER EDGE



## HERITAGE



## PROMENADE



## BEACH



## RIPARIAN



## WETLAND



## BOARDWALK



## PARKLAND



## STEPPED

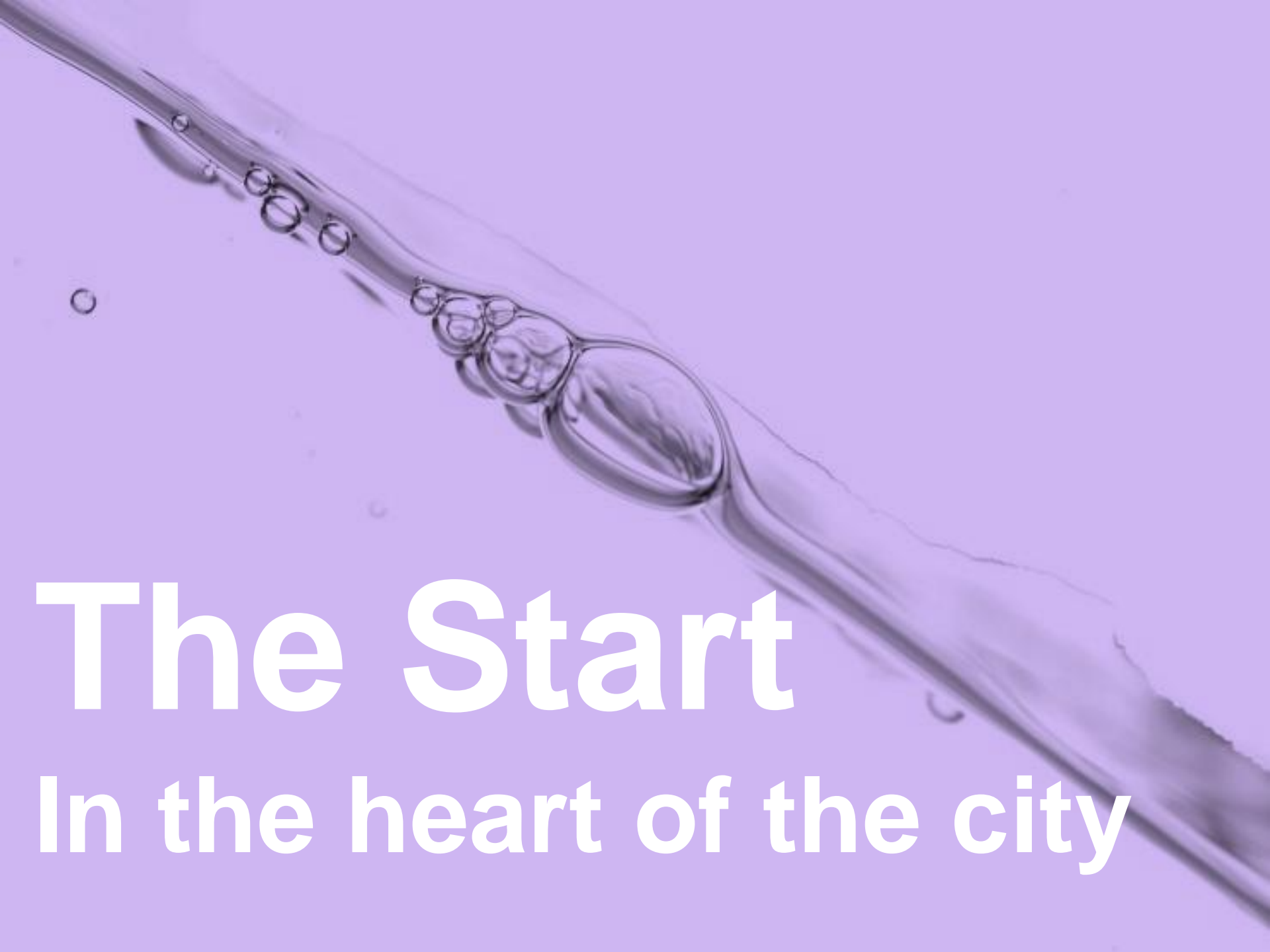




# BIG MOVES // RIVERSIDE ECO COMMUNITY







# The Start

In the heart of the city



# River of Life

Bangunan Sultan Abdul Samad

Masjid Jamek

Jalan Raja

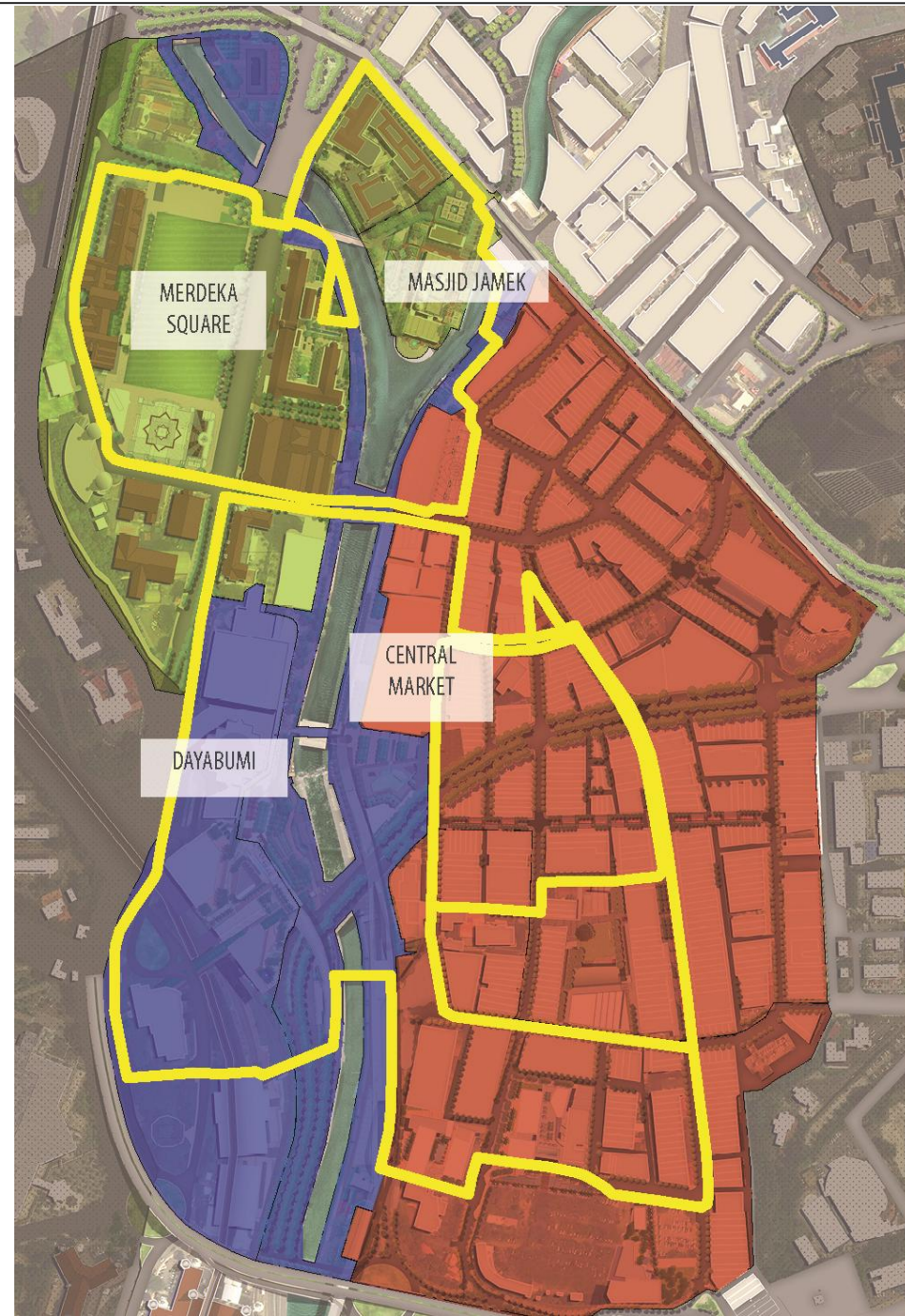
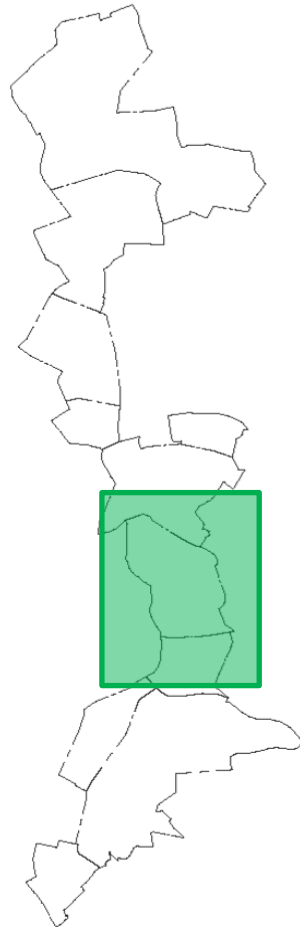
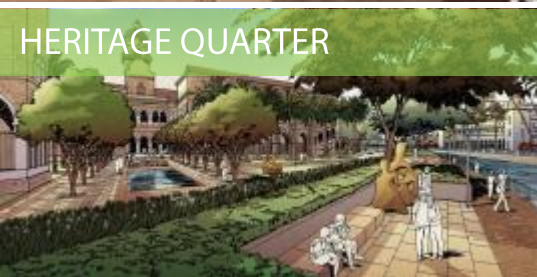
Jalan Raja





# P7 MASTER PLAN

## Zoning Plan







**PRECINCT 7 – AERIAL VIEW**



# P7 RIVERFRONT

St. Mary's Cathedral

## Before

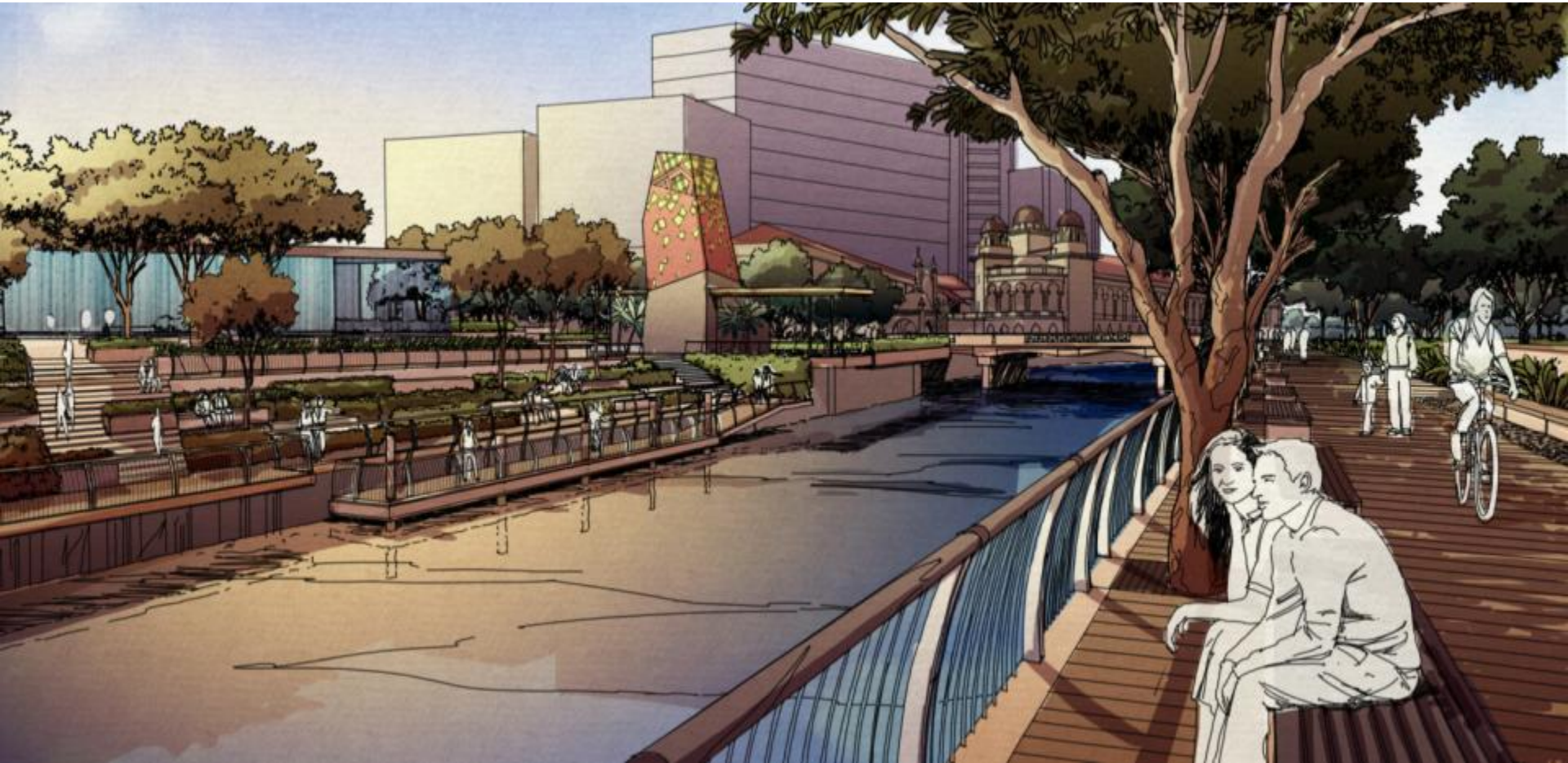




# P7 RIVERFRONT

St. Mary's Cathedral

After





# P7 RIVERFRONT

Leboh Pasar Besar

## Before



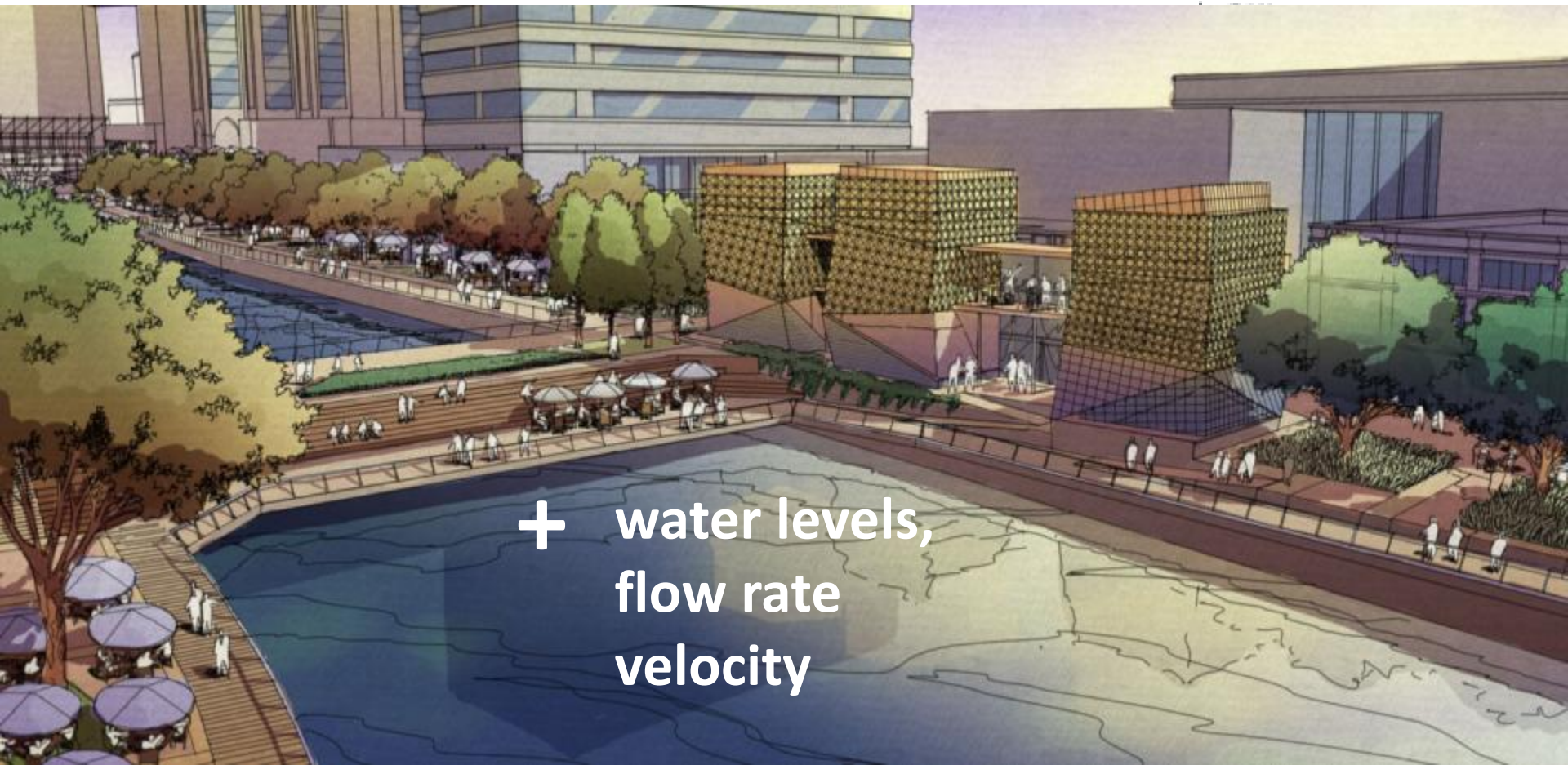


# P7 RIVERFRONT

Leboh Pasar Besar

After

MIKE  SCADA



+ water levels,  
flow rate  
velocity



# P7 RIVERFRONT

Leboh Pasar Besar

## Before



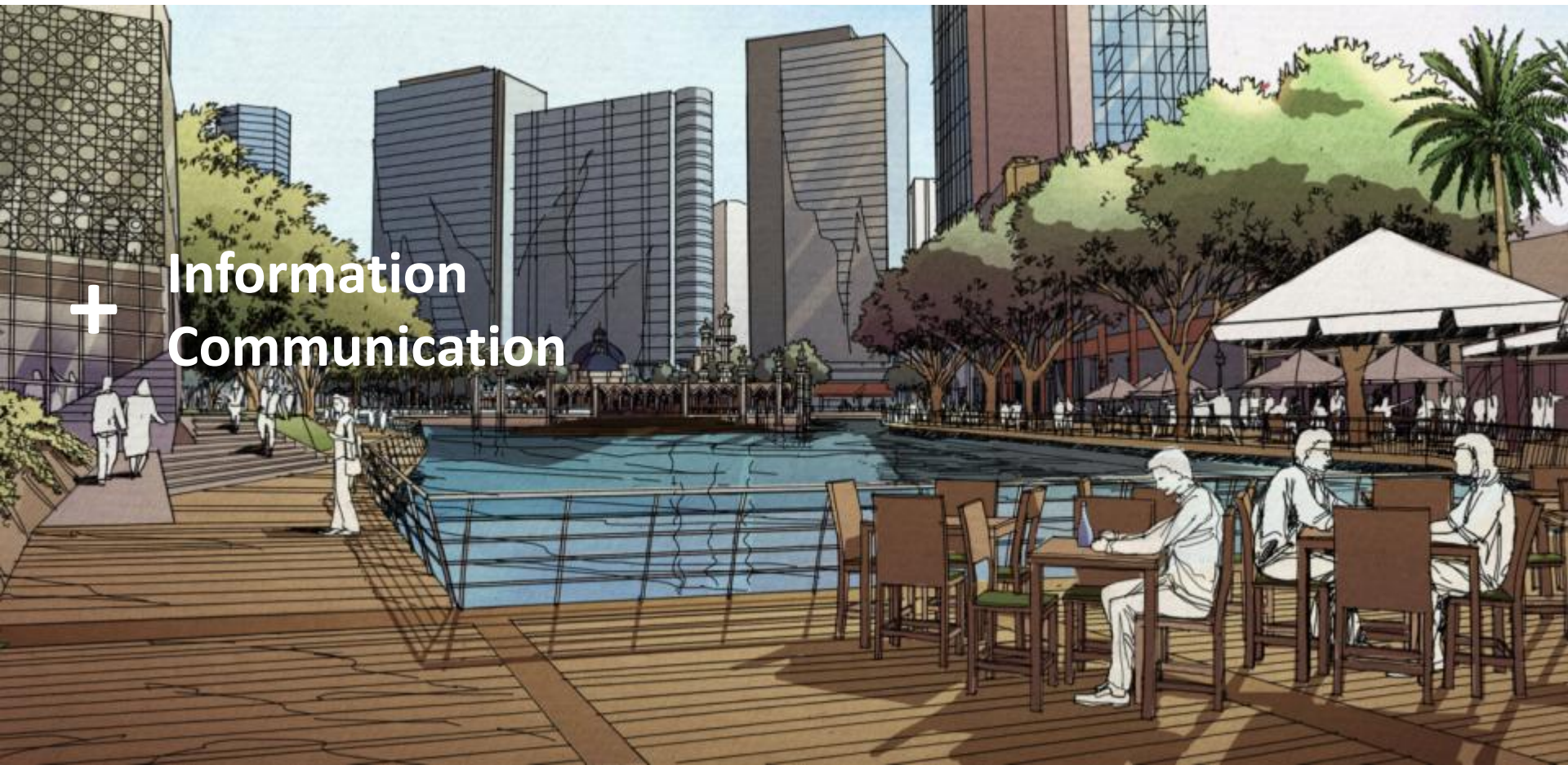


# P7 RIVERFRONT

Leboh Pasar Besar

## After

+ Information  
Communication

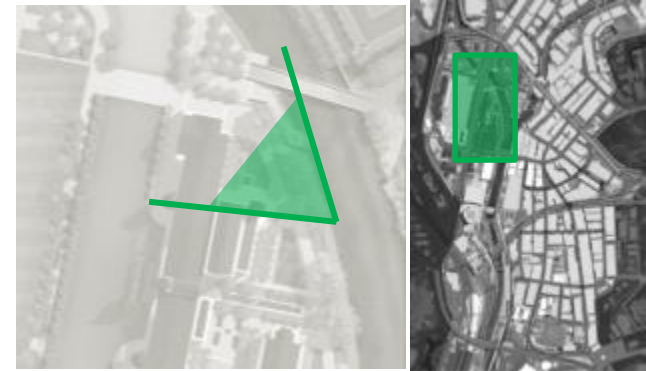




# P7 RIVERFRONT

Bangunan Sultan Abdul Samad (BSAS)

## Before

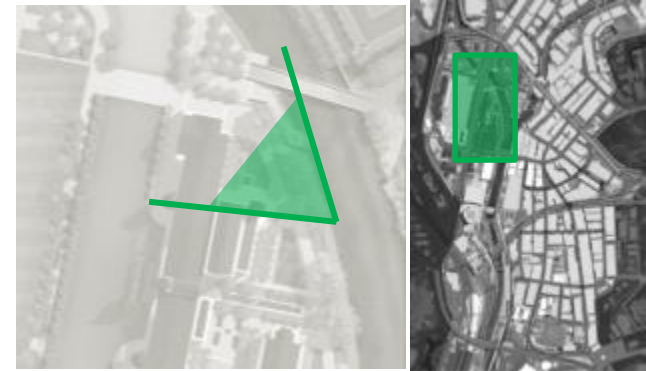




# P7 RIVERFRONT

Bangunan Sultan Abdul Samad (BSAS)

After







**PRECINCT 7**

**HERITAGE TRAILS**

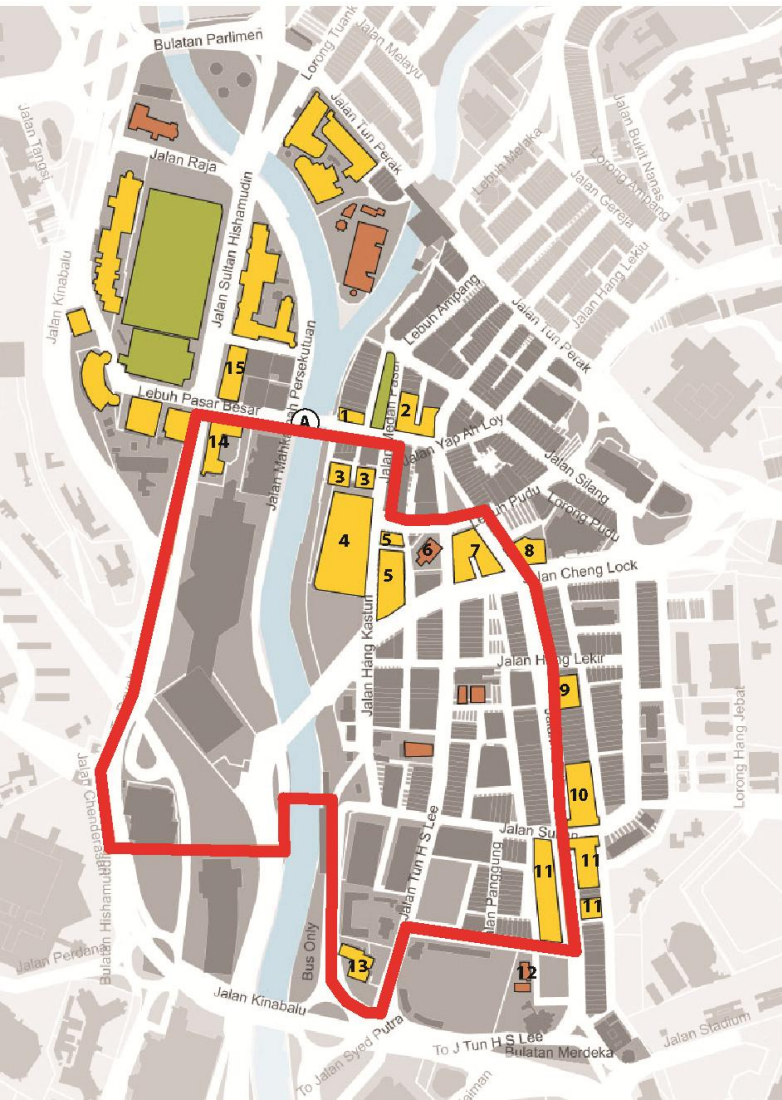






# HERITAGE TRAILS

## Cultural Walk



### ROUTE 2 - CULTURAL WALK

GUIDING GALLERY - CENTRAL MARKET - PETALING STREET - TEXTILE MUSEUM - GUIDING GALLERY



A. Lebuhr Pasar Besar



1. Shophouse

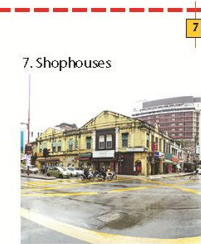


2. Shophouses

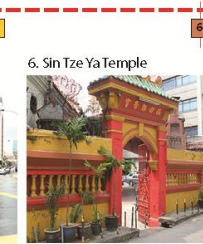


3. Central Market Annex

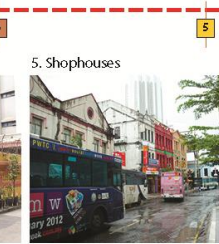
A



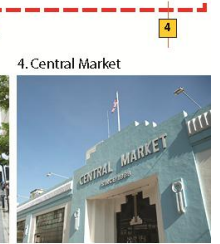
7. Shophouses



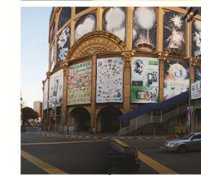
6. Sin Tze Ya Temple



5. Shophouses



4. Central Market



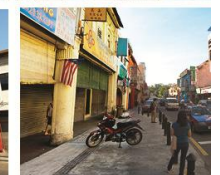
8. Wisma Fui Chiu



9. Shophouses



10. Shophouses



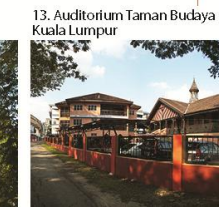
11. Shophouses



15. Old Post Office



14. Textile Museum



13. Auditorium Taman Budaya Kuala Lumpur



12. Gurdwara Sahib Polis Temple

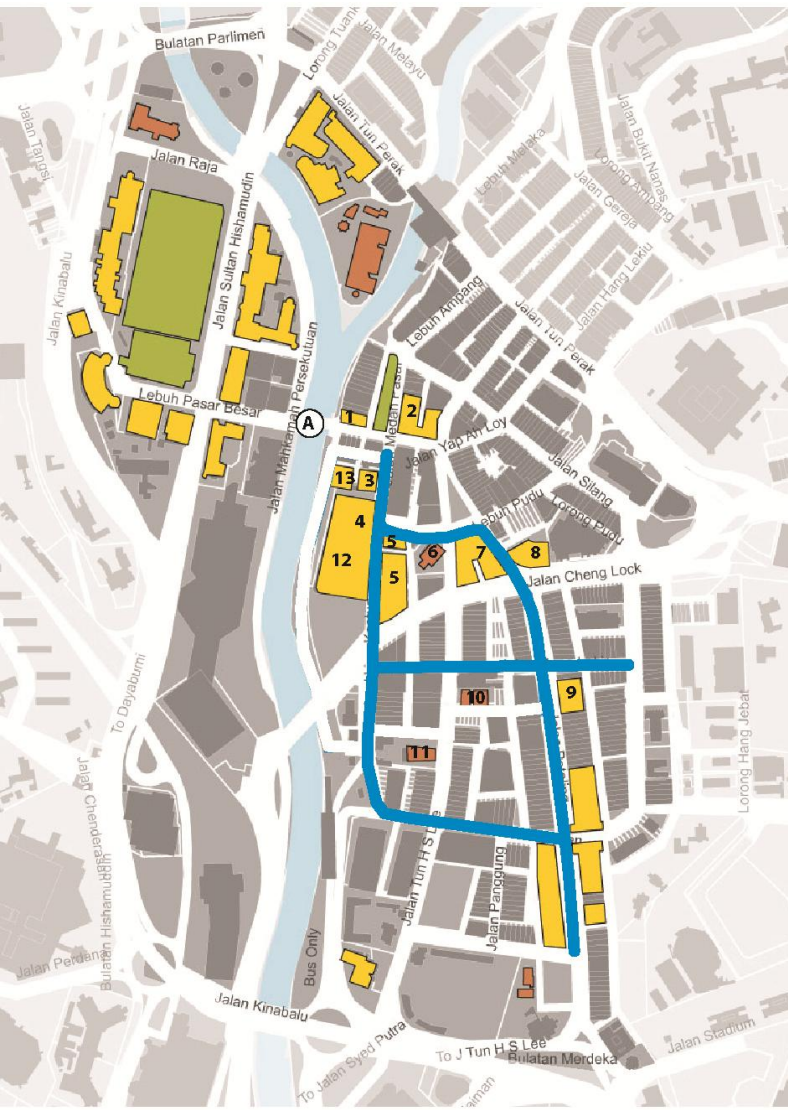
#### Legend

- Heritage Building
- Religious Building
- Open Space
- Guiding Gallery
- Colonial Walk
- Cultural Walk
- Chinatown Walk



# HERITAGE TRAILS

## Chinatown Walk



### ROUTE 3 - CHINATOWN WALK

GUIDING GALLERY - CENTRAL MARKET - PETALING STREET - RIVER CORRIDOR - GUIDING GALLERY



A. Lebuhr Pasar Besar



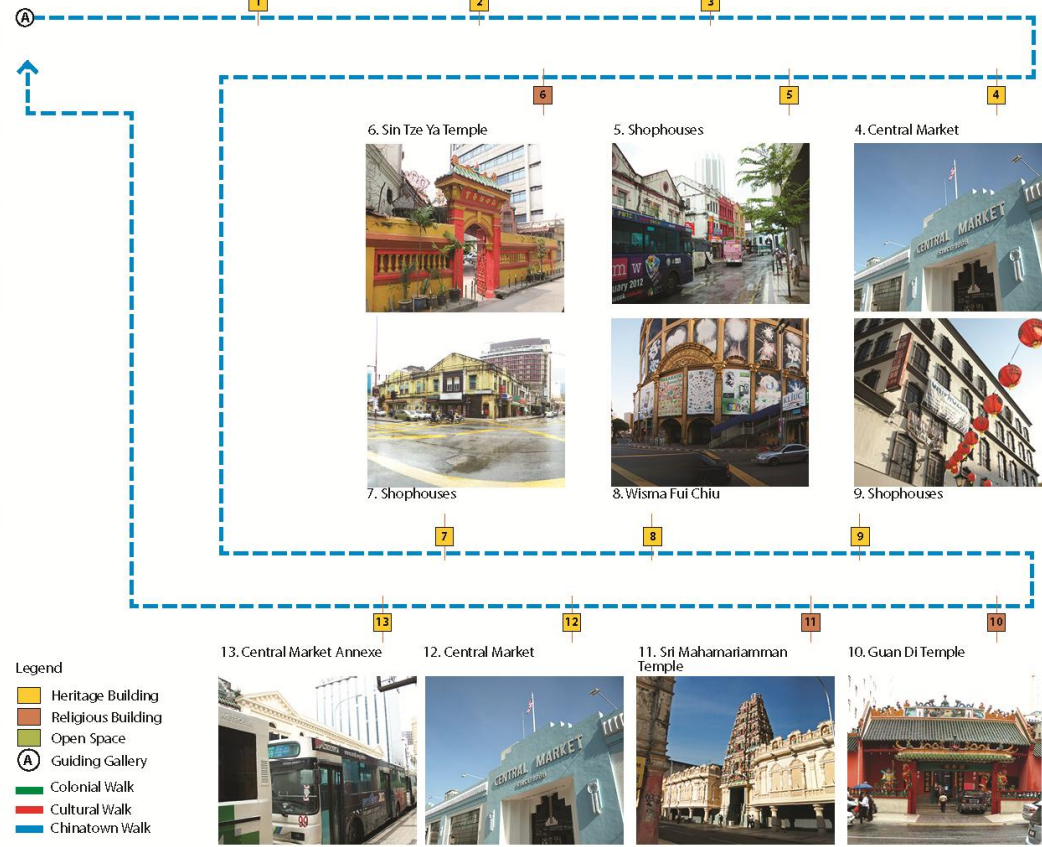
1. Shophouse



2. Shophouses



3. Central Market Annex



#### Legend

- Heritage Building
- Religious Building
- Open Space
- Guiding Gallery
- Colonial Walk
- Cultural Walk
- Chinatown Walk

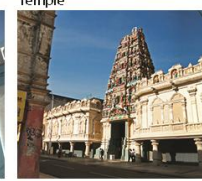
13. Central Market Annex



12. Central Market



11. Sri Mahamariamman Temple



10. Guan Di Temple



6. Sin Tze Ya Temple



5. Shophouses



4. Central Market



7. Shophouses



8. Wisma Fui Chiu

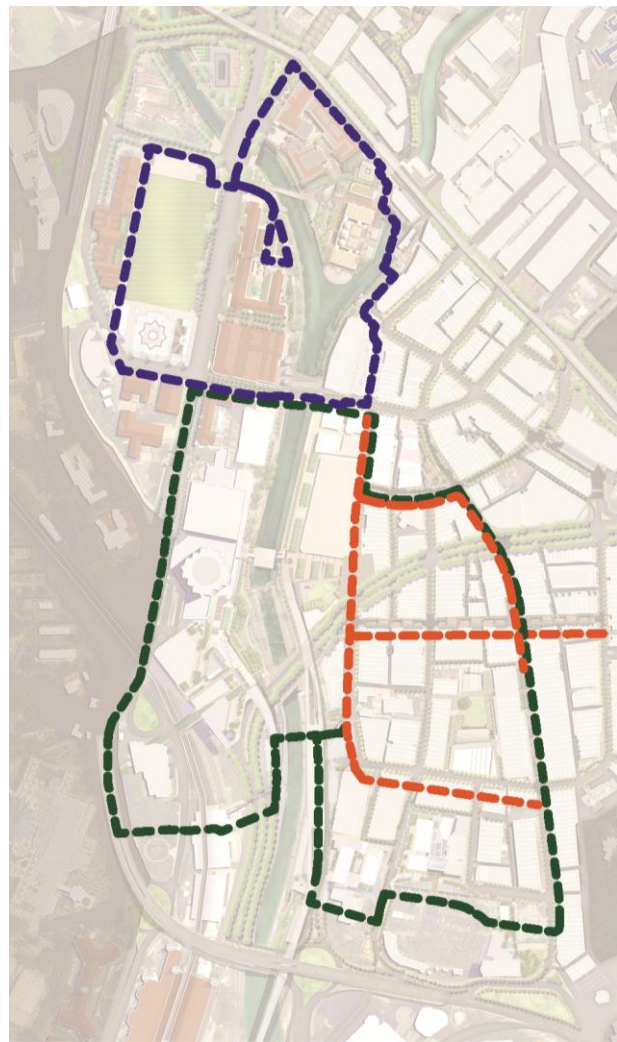


9. Shophouses



# HERITAGE TRAILS

## WAY FINDING



PEDESTRIAN GATEWAY OPTION 1	PEDESTRIAN GATEWAY OPTION 2	DIRECTIONAL	INTERPRETIVE	DIRECTIONAL INTERSECTION OF TRAILS	MEDALLION





# PRECINCT 7

## CHINATOWN



# P7 CHINATOWN



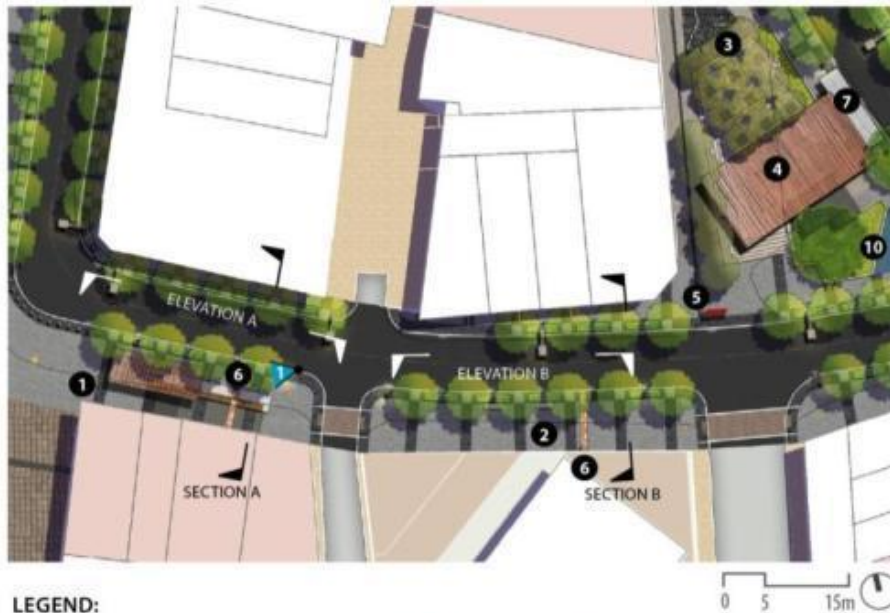
## A Historic Triangle





# P7 CHINATOWN

## Design Features // Interpretative & Heritage Lookout



### LEGEND:

- 1 INTERPRETATIVE
- 2 HERITAGE LOOKOUT
- 3 BANGKOK BANK TRIANGLE
- 4 CAFE
- 5 GATEWAY SIGNAGE
- 6 INFORMATION SIGNAGE
- 7 BUS STOP
- 8 WATER FEATURE W/ SCULPTUR

### SITE PHOTOS



ELEVATION A (1:400)



ELEVATION B (1:400)



SECTION A (1:400)



SECTION B (1:400)



### PERSPECTIVE





# BEFORE// KASTURI WALK







# AFTER// KASTURI WALK



# P7 CHINATOWN

## Design Features // Bangkok Bank Triangle



### LEGEND:

- 1 INTERPRETATIVE
- 2 HERITAGE LOOKOUT
- 3 BANGKOK BANK TRIANGLE
- 4 CAFE
- 5 GATEWAY SIGNAGE
- 6 DIRECTIONAL SIGNAGE
- 7 INFORMATION SIGNAGE
- 8 MOTORCYCLE PARKING
- 9 BUS STOP
- 10 WATER FEATURE W/ SCULPTURE



### SITE PHOTOS



### SECTION A (1:300)



### PERSPECTIVES





# BEFORE// Bangkok Bank Triangle





# P7 CHINATOWN

## BANGKOK BANK TRIANGLE





# River of Life





# **AFTER//** Bangkok Bank Triangle





# Kuala Lumpur City by 2020





# Kuala Lumpur City by 2020



TERIMA KASIH